

NSX From Scratch | Deploying ESG

The SDN solution from VMware



This document was created using the official VMware icon and diagram library. Copyright © 2017 VMware, Inc. All rights reserved. This product is protected by U.S. and international copyright and intellectual property laws. VMware products are covered by one or more patents listed at <http://www.vmware.com/go/patents>.

VMware does not endorse or make any representations about third party information included in this document, nor does the inclusion of any VMware icon or diagram in this document imply such an endorsement.

Course Content

1. Introduction to SDN and NSX
2. Lab setup
3. NSX components
4. Architecture and sample designs
5. Preparing the physical network
6. Deploying NSX manager
7. Deploying controller(s)
8. Preparing vSphere clusters
9. Creating logical switches
10. Deploying DLR
11. L2 bridging
12. Exploring Security features
- 13. Configuring DFW**
14. Security Groups
- ~~15. Identity-based firewall~~
16. SpoofGuard
17. Application Rule Manager (ARM)

- 18. Deploy ESG**
19. Configuring OSPF
20. Load balancer
21. SSL VPN-PLUS
22. Flow monitoring
23. Useful commands
24. vRealize Network Insight

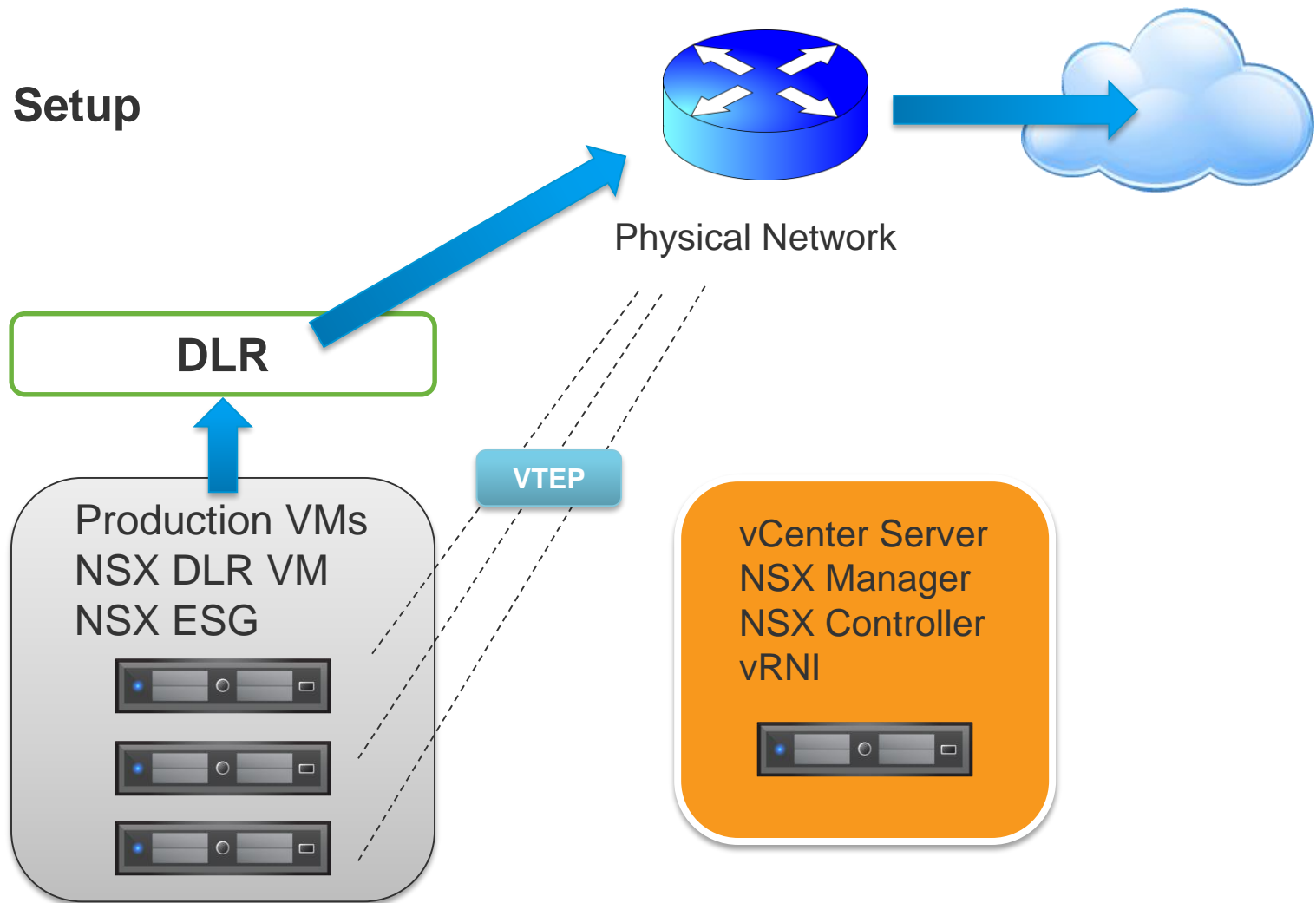
ESG = Edge Services Gateway

Services

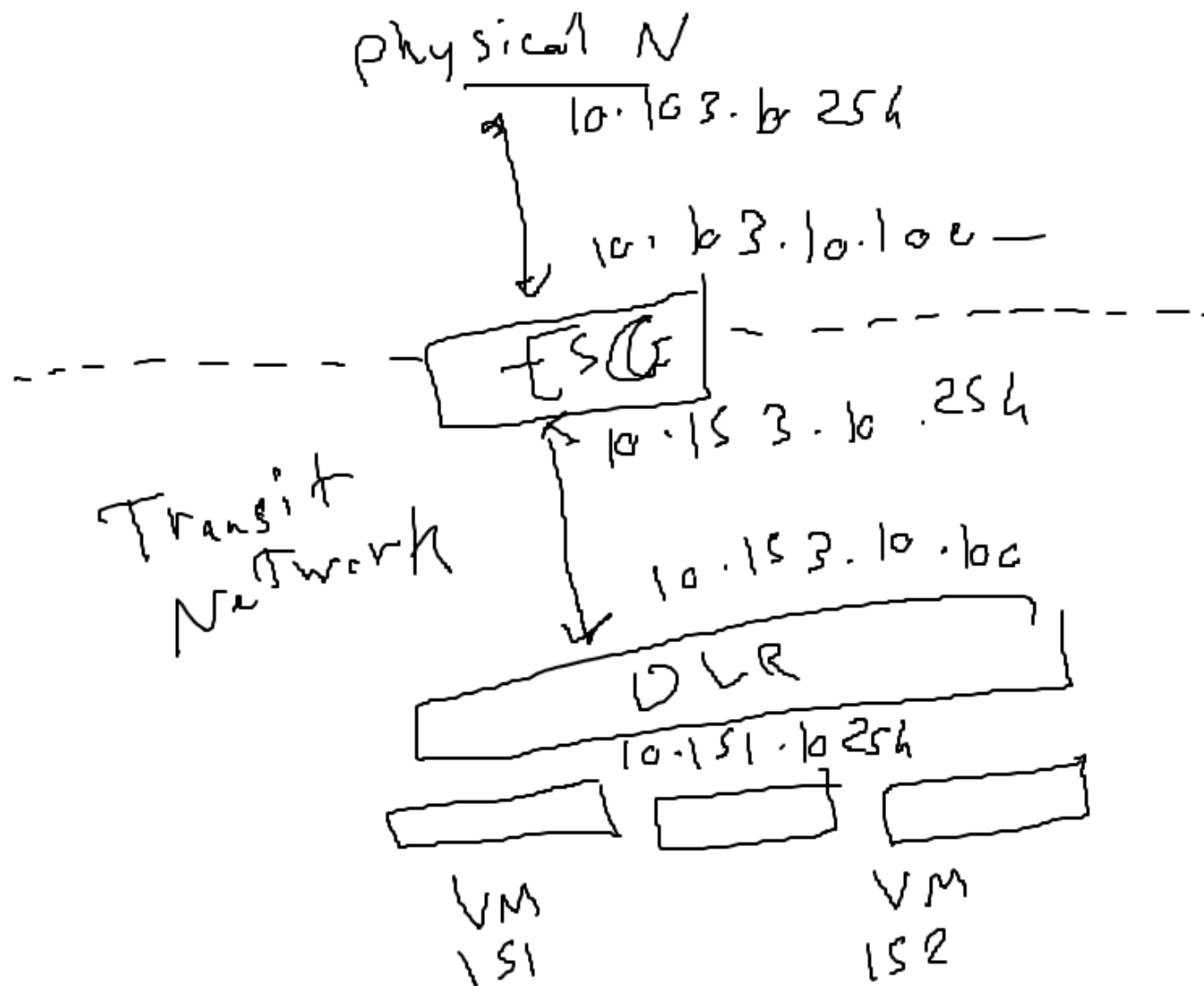
- ✓ Router (OSPF, BGP)
- ✓ Edge Firewall
- ✓ DHCP (Server / relay)
- ✓ NAT
- ✓ Site-to-site VPN
- ✓ SSL VPN for client users
- ✓ Load balancer

NSX from Scratch – Deploying ESG

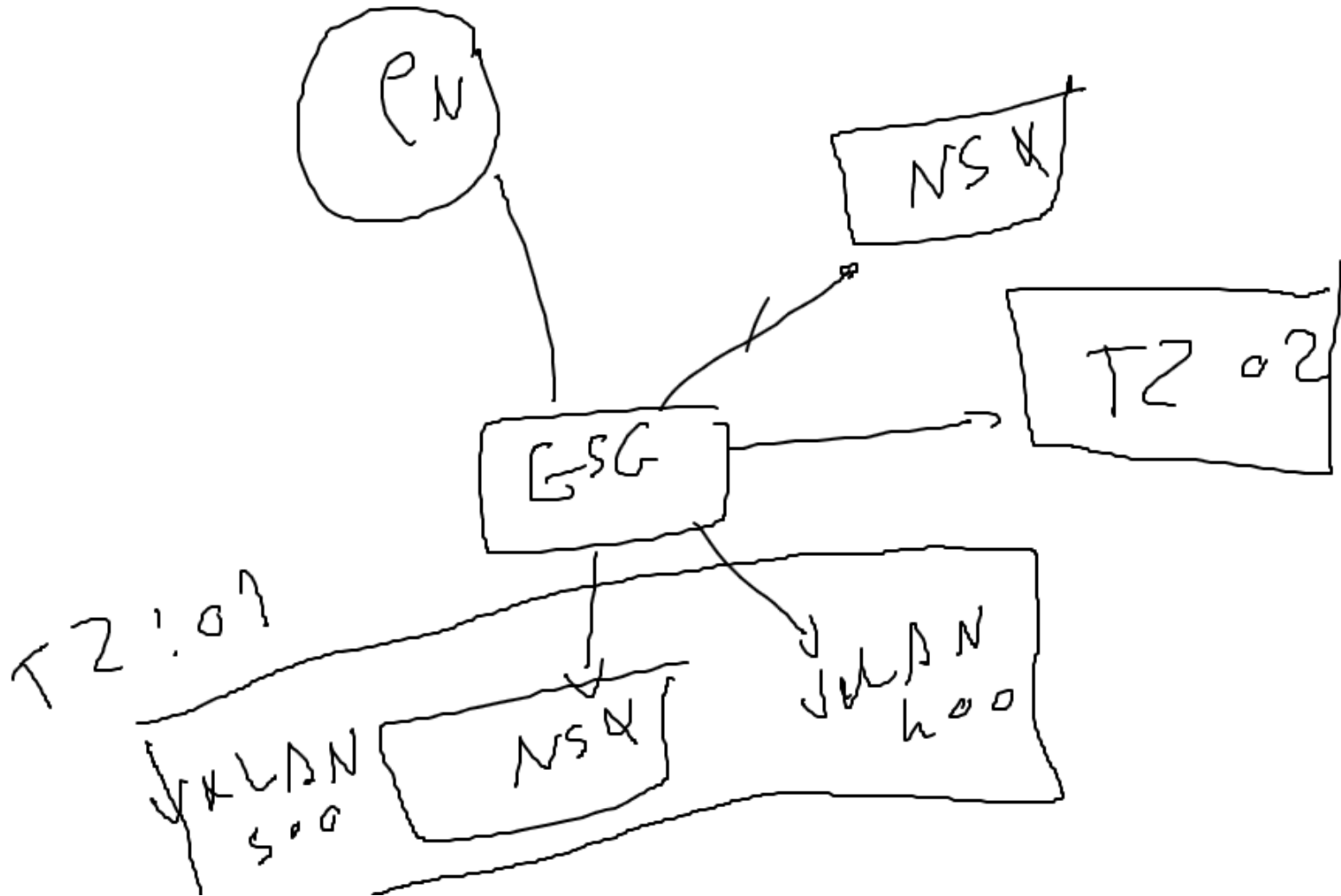
Lab Setup



NSX from Scratch – Deploying ESG

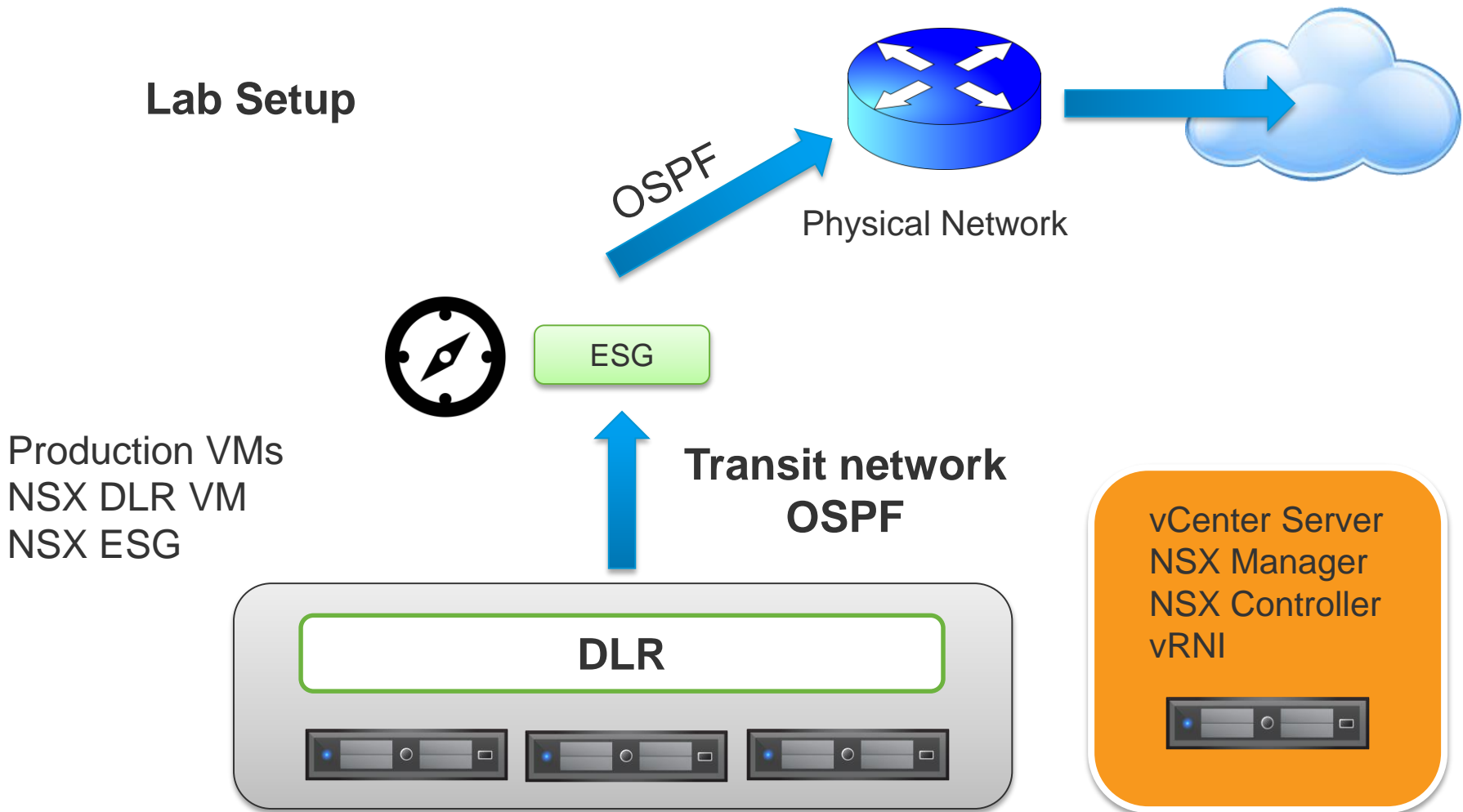


NSX from Scratch – Deploying ESG

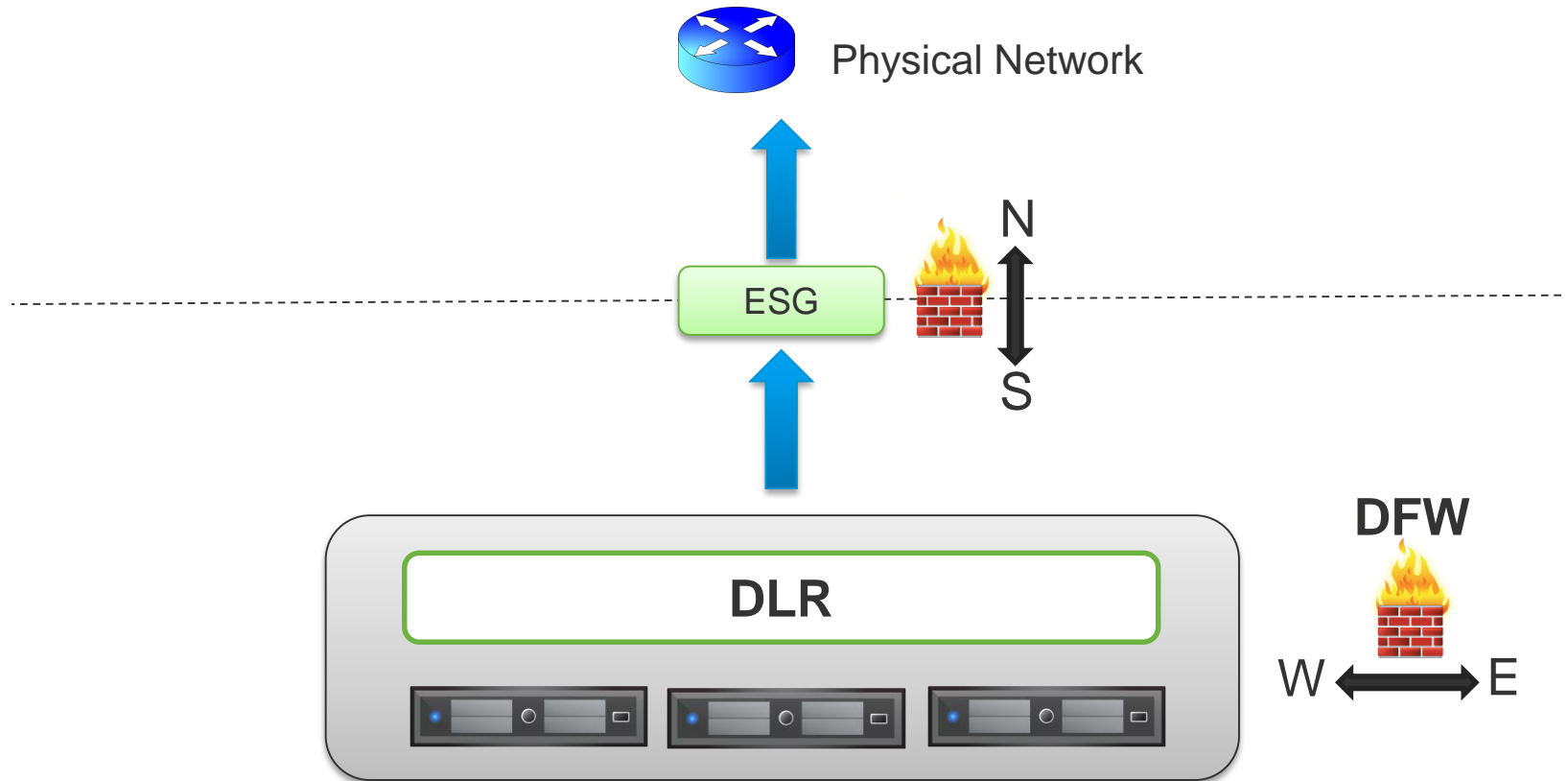


NSX from Scratch – Deploying ESG

Lab Setup

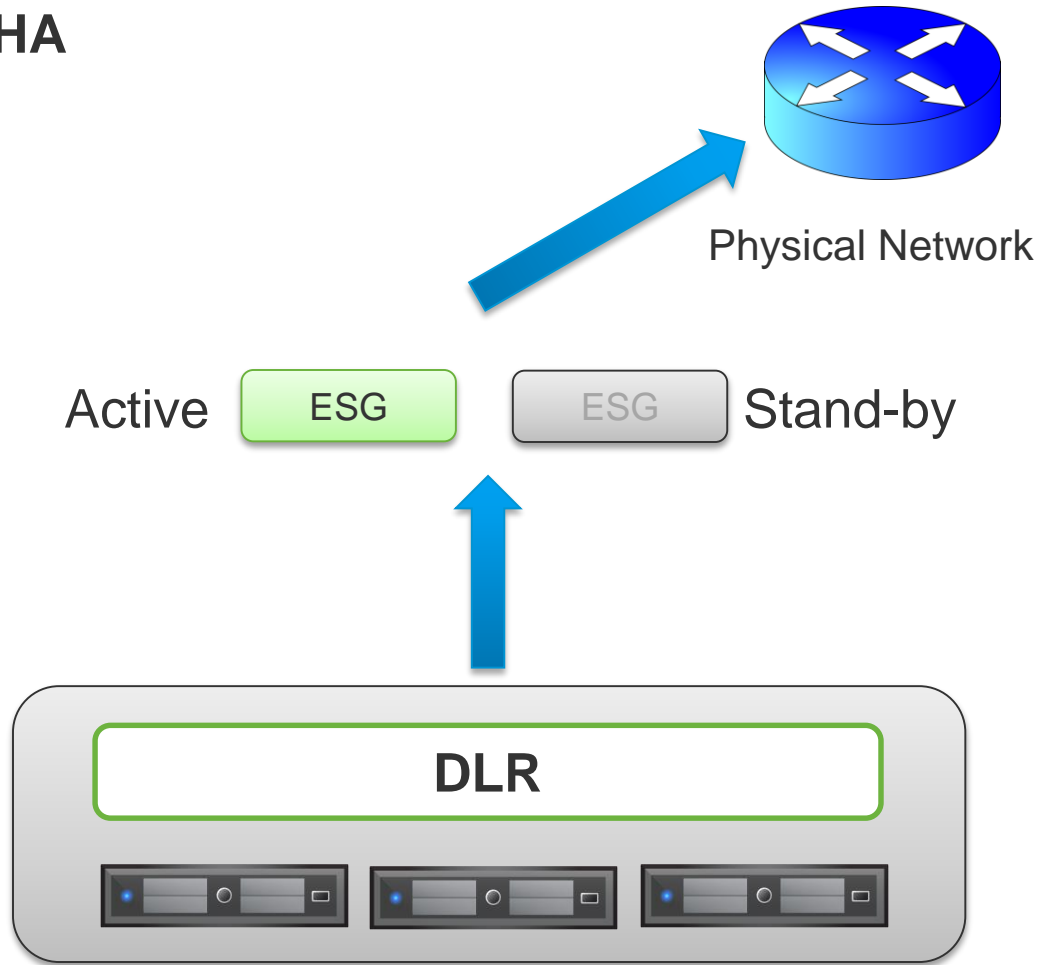


ESG – Perimeter Firewall



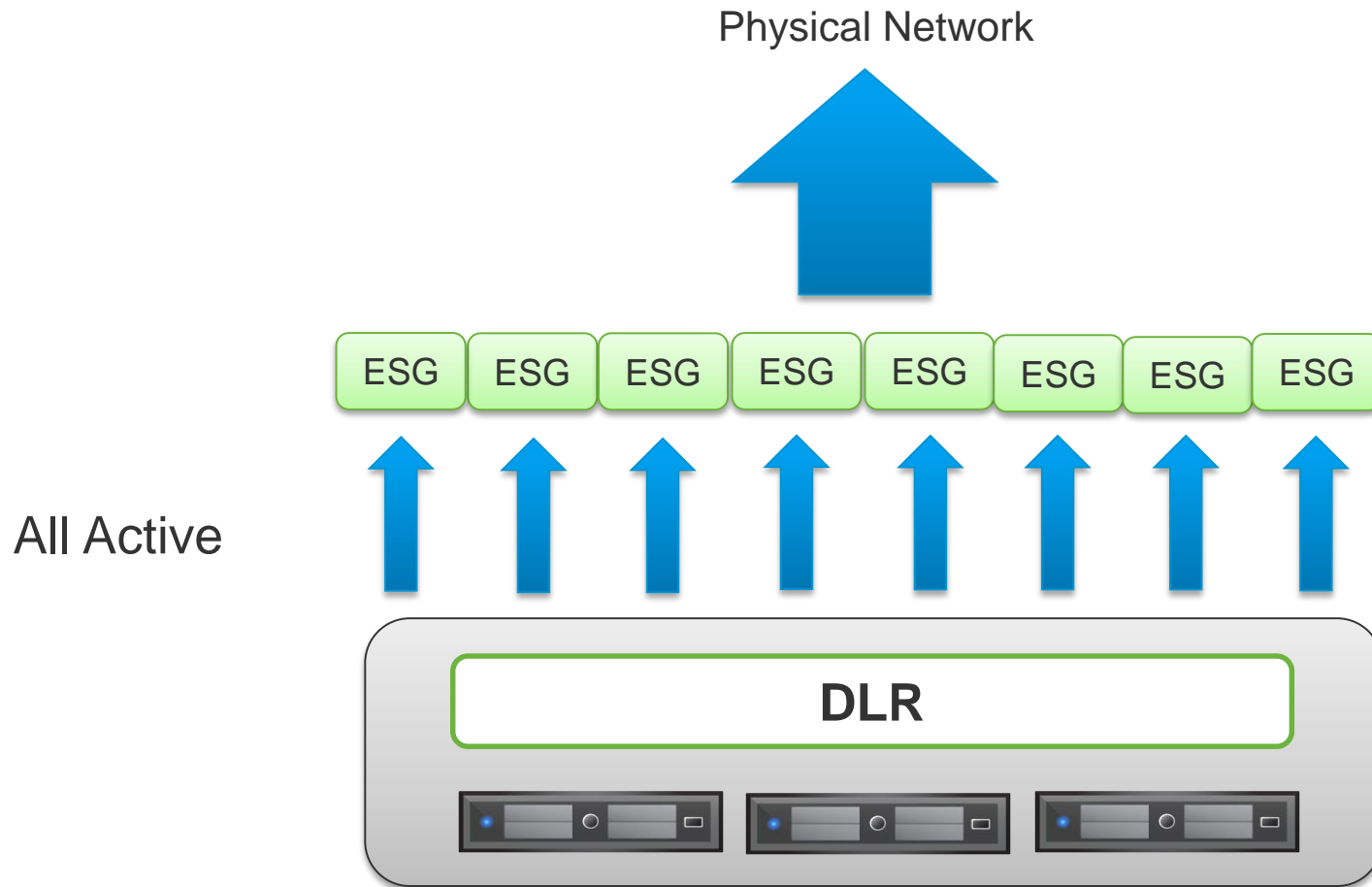
NSX from Scratch – Deploying ESG

ESG HA



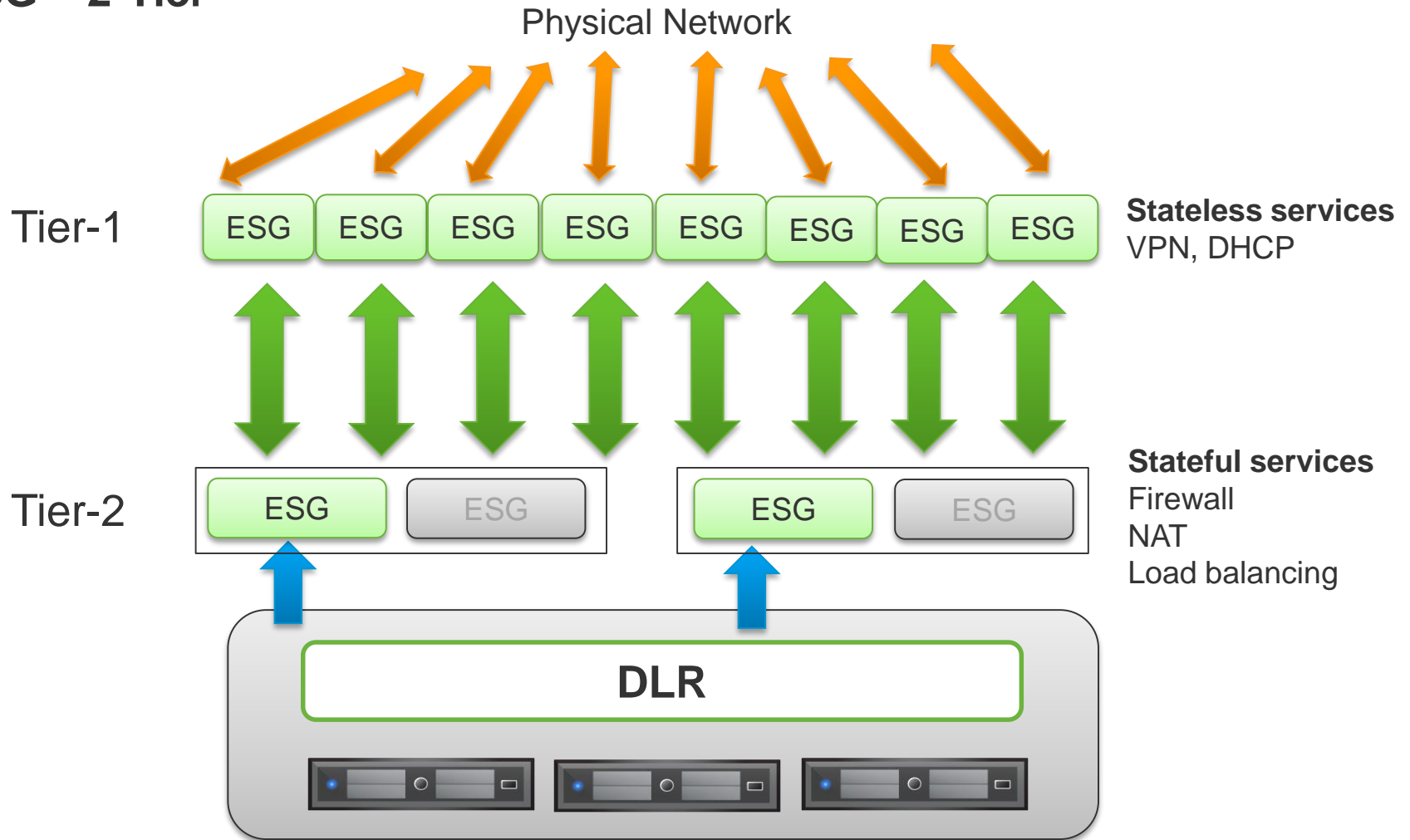
NSX from Scratch – Deploying ESG

ESG - ECMP



NSX from Scratch – Deploying ESG

ESG – 2-Tier



DEMO

Contact Info

Email: mroushdy@arabitnetwork.com

Blog: www.arabitnetwork.com

 youtube.com/c/MohamedRoushdy

