

NSX From Scratch | L2 Bridging

The SDN solution from VMware



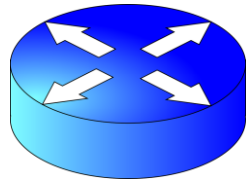
This document was created using the official VMware icon and diagram library. Copyright © 2017 VMware, Inc. All rights reserved. This product is protected by U.S. and international copyright and intellectual property laws. VMware products are covered by one or more patents listed at <http://www.vmware.com/go/patents>.

VMware does not endorse or make any representations about third party information included in this document, nor does the inclusion of any VMware icon or diagram in this document imply such an endorsement.

Course Content

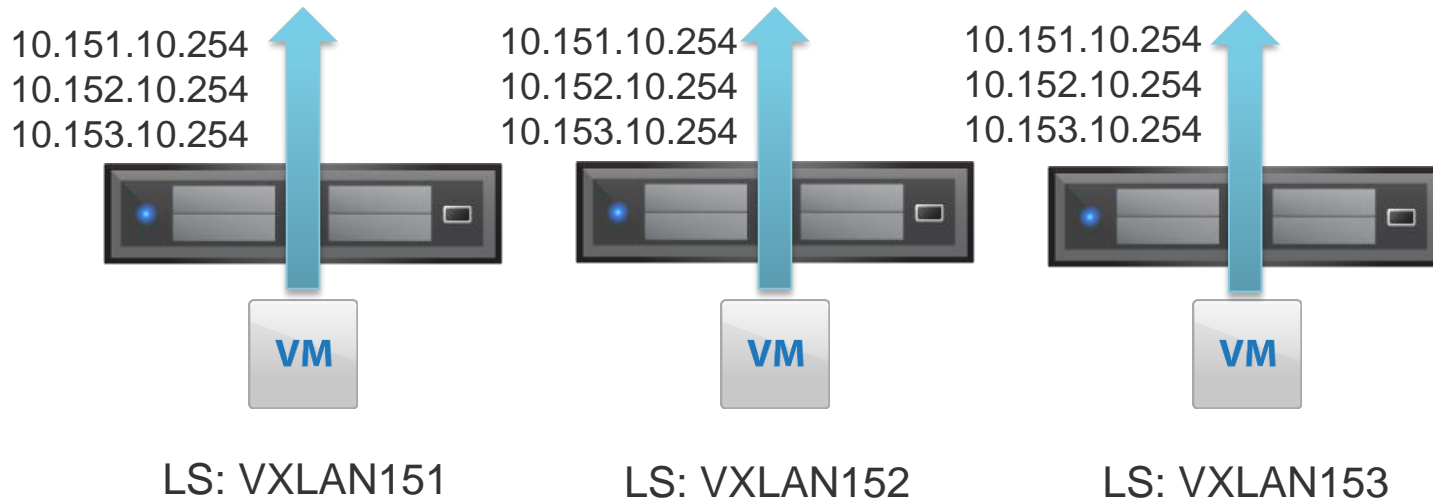
1. Introduction to SDN and NSX
2. Lab setup
3. NSX components
4. Architecture and sample designs
5. Preparing the physical network
6. Deploying NSX manager
7. Deploying controller(s)
8. Preparing vSphere clusters
9. Creating logical switches
10. Deploying DLR
- 11. L2 bridging**
12. Exploring Security features
13. Configuring DFW
14. Security Groups
15. Identity-based firewall
16. SpoofGuard
17. Application Rule Manager (ARM)
18. Deploy ESG
19. Configuring OSPF
20. Load balancer
21. SSL VPN-PLUS
22. Flow monitoring
23. Useful commands
24. vRealize Network Insight

NSX from Scratch – L2 Bridging



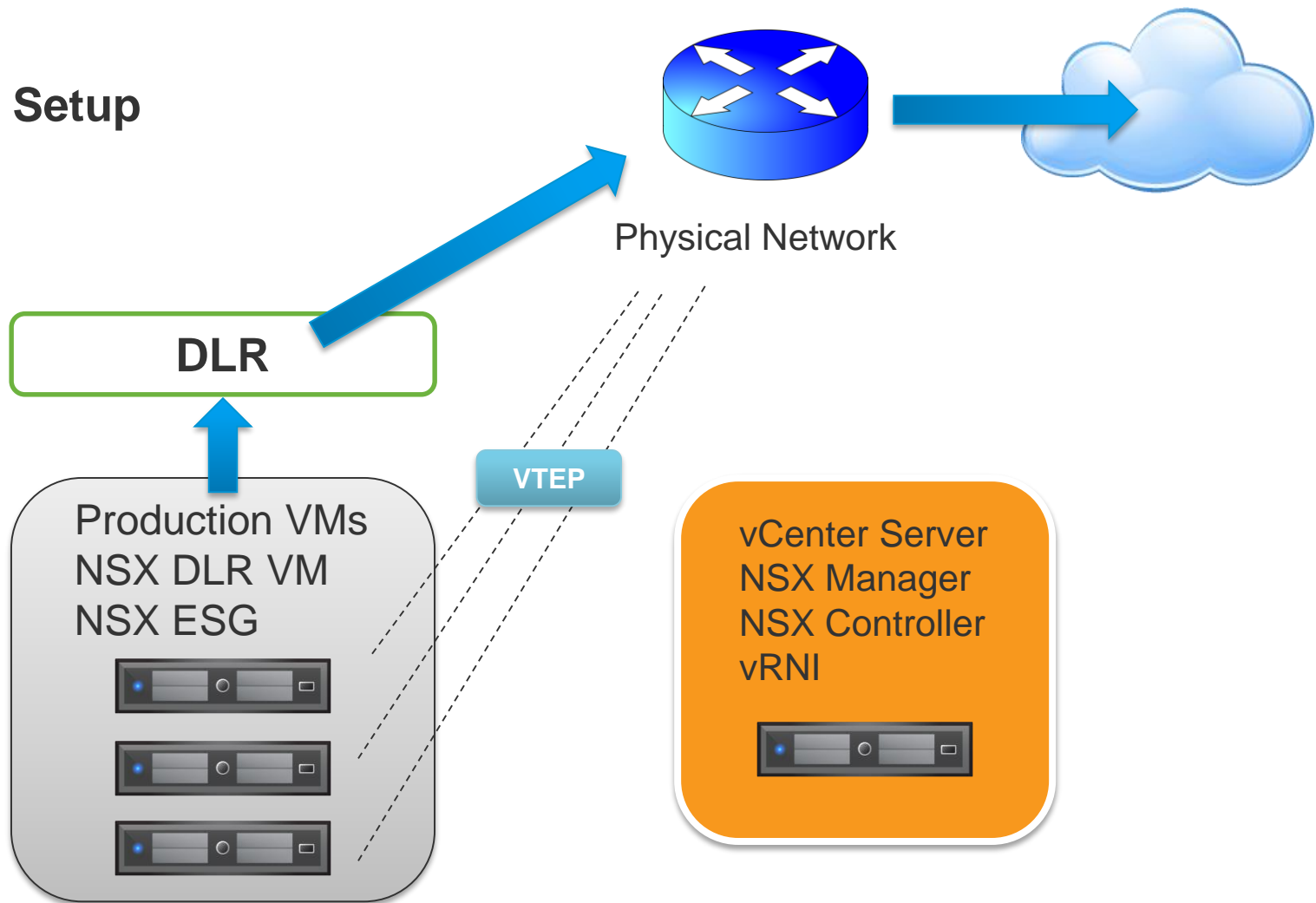
DLR

10.151.10.254
10.152.10.254
10.153.10.254

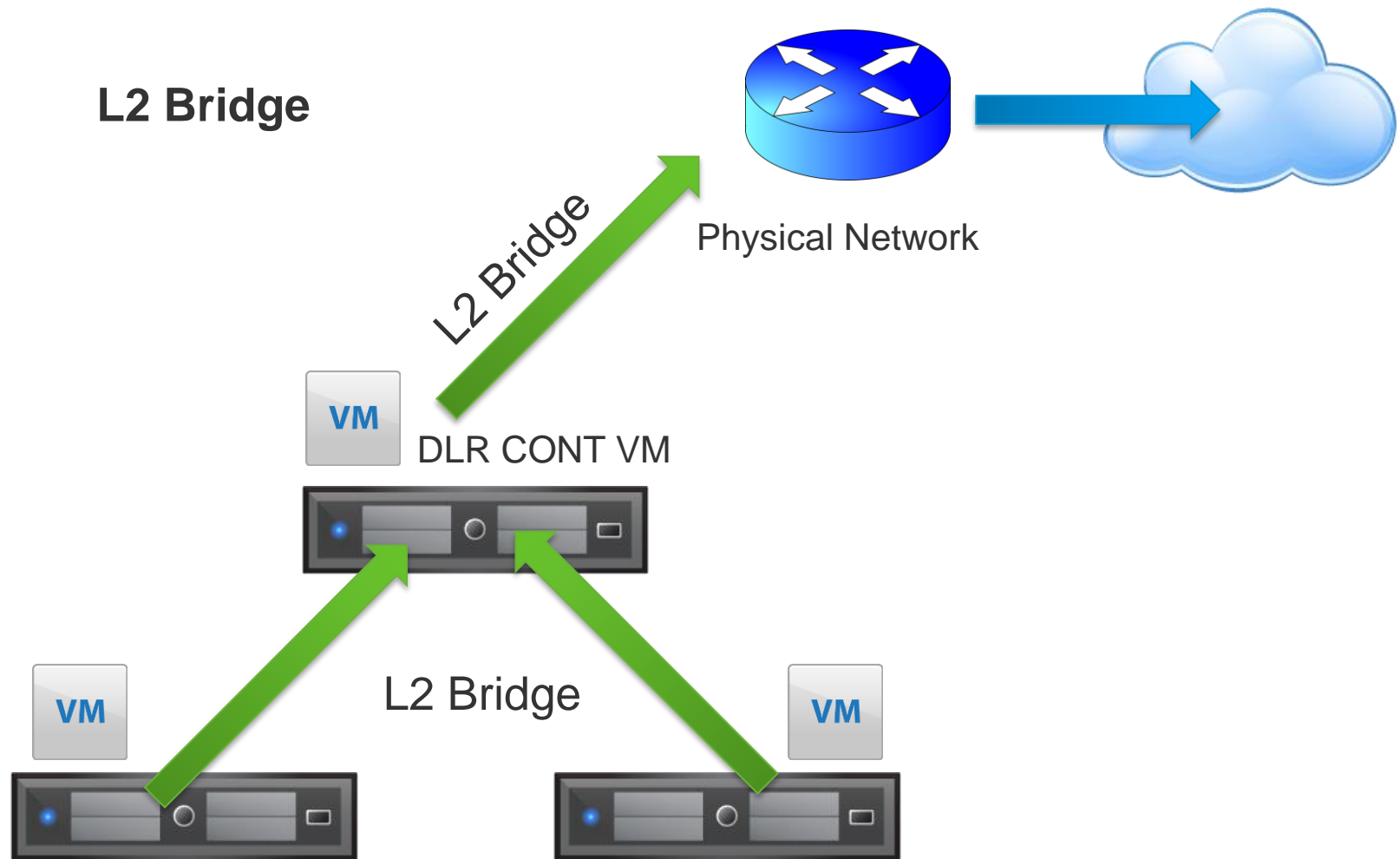


NSX from Scratch – L2 Bridging

Lab Setup



NSX from Scratch – L2 Bridging



DEMO

Contact Info

Email: mroushdy@arabitnetwork.com

Blog: www.arabitnetwork.com

 youtube.com/c/MohamedRoushdy



