

NSX From Scratch | NSX Components

The SDN solution from VMware



This document was created using the official VMware icon and diagram library. Copyright © 2017 VMware, Inc. All rights reserved. This product is protected by U.S. and international copyright and intellectual property laws. VMware products are covered by one or more patents listed at <http://www.vmware.com/go/patents>.

VMware does not endorse or make any representations about third party information included in this document, nor does the inclusion of any VMware icon or diagram in this document imply such an endorsement.

Course Content

1. Introduction to SDN and NSX
2. Lab setup
- 3. NSX components**
4. Architecture and sample designs
5. Preparing the physical network
6. Deploying NSX manager
7. Deploying controller(s)
8. Preparing vSphere clusters
9. Creating logical switches
10. Deploying DLR
11. L2 bridging
12. Exploring Security features
13. Configuring DFW
14. Security Groups
15. Identity-based firewall
16. SpoofGuard
17. Application Rule Manager (ARM)
18. Deploy ESG
19. Configuring OSPF
20. Load balancer
21. SSL VPN-PLUS
22. Flow monitoring
23. vRealize Network Insight

NSX from Scratch – NSX Components

NSX Components



NSX Manager



NSX Control
Plane Node



NSX Edge Node

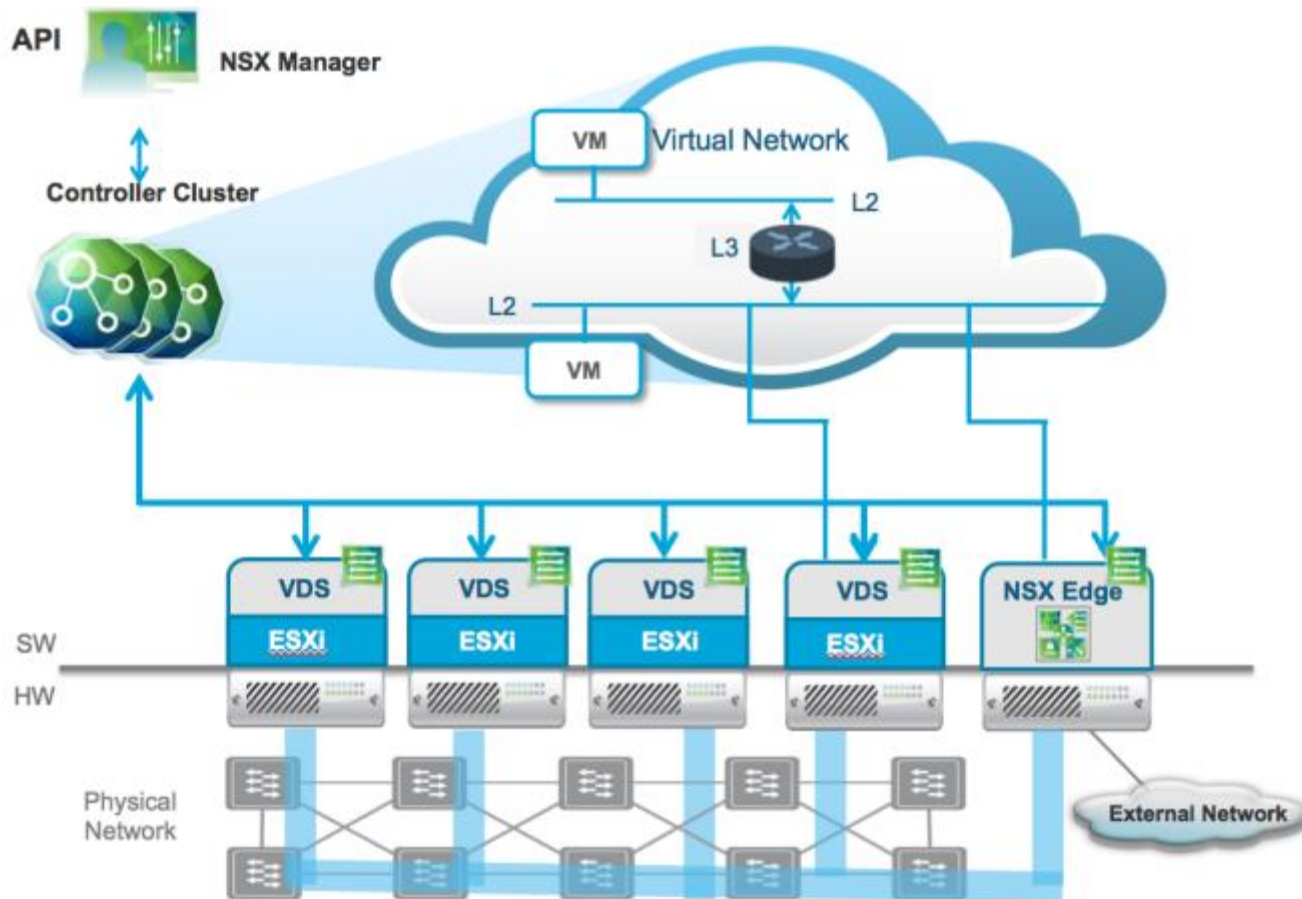


NSX Firewall



NSX Router

NSX from Scratch – NSX Components



Contact Info

Email: mroushdy@arabitnetwork.com

Blog: www.arabitnetwork.com

 youtube.com/c/MohamedRoushdy

